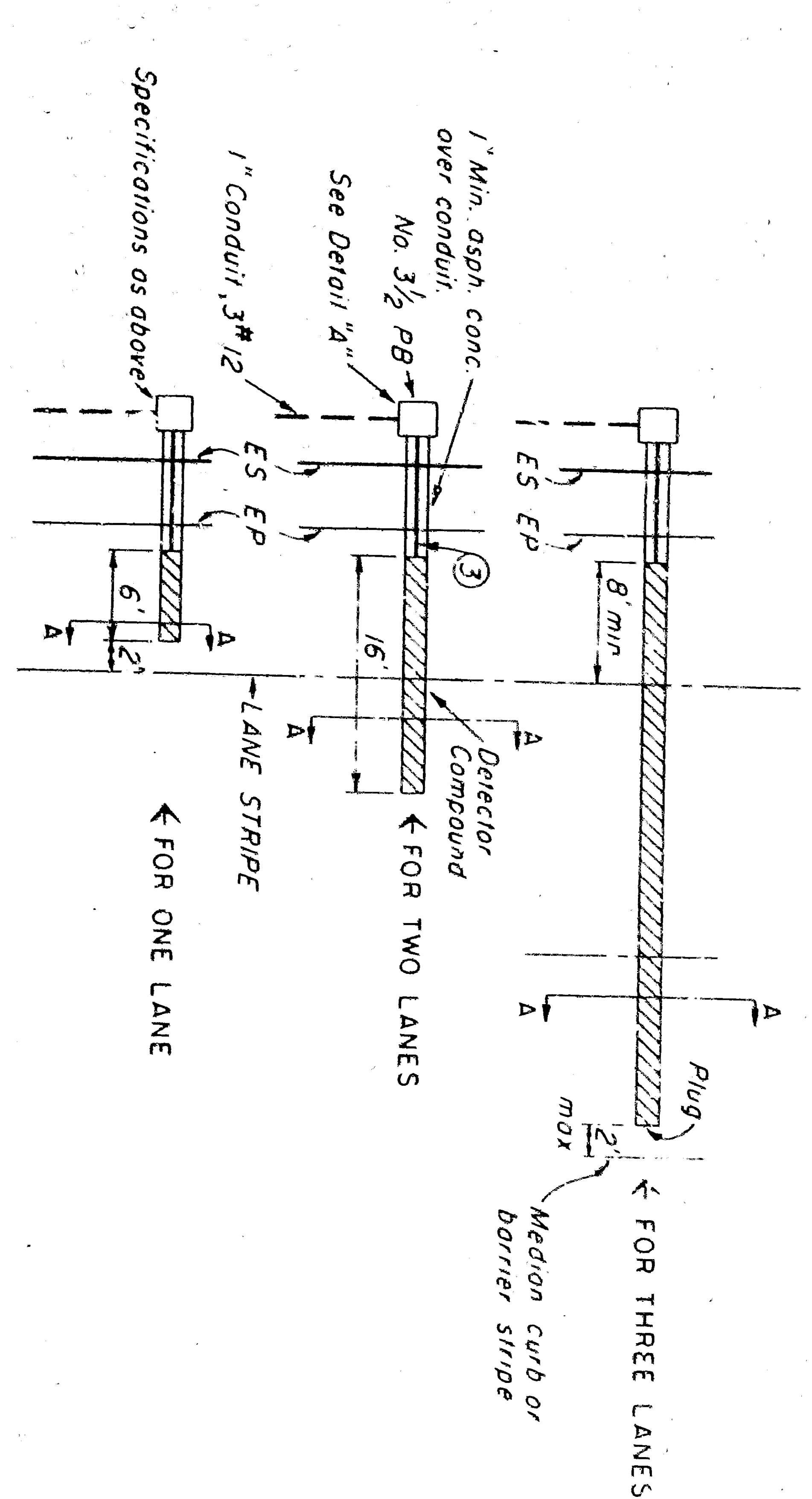
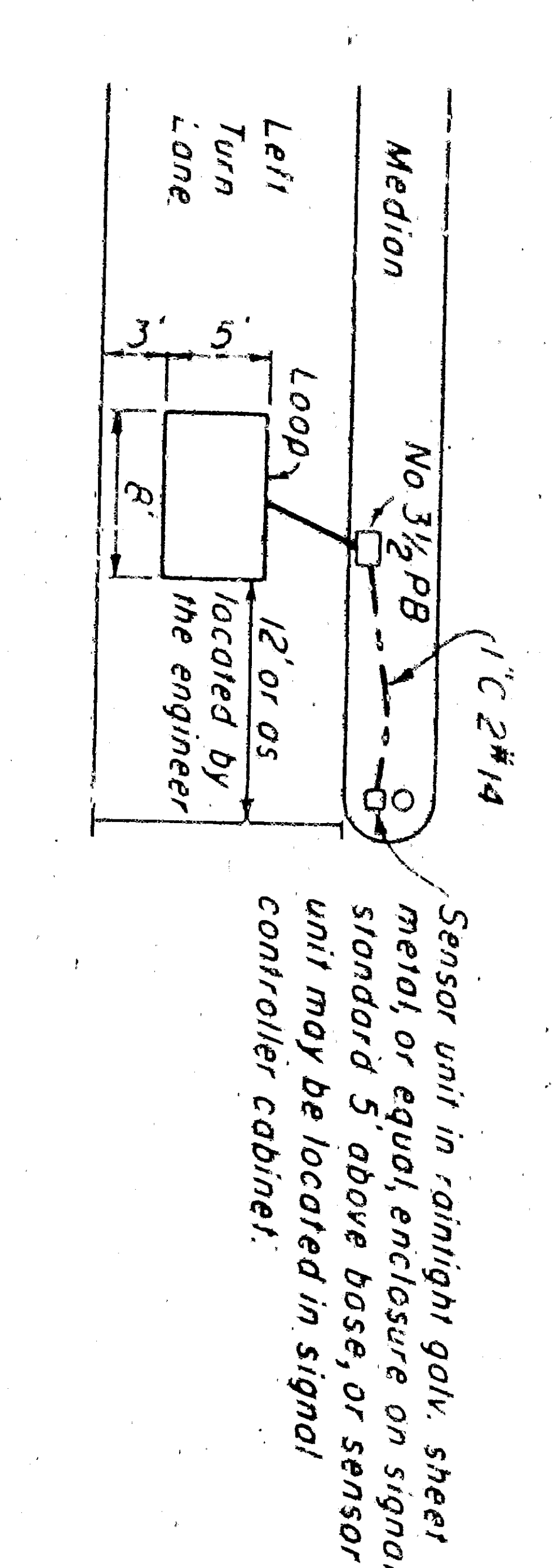
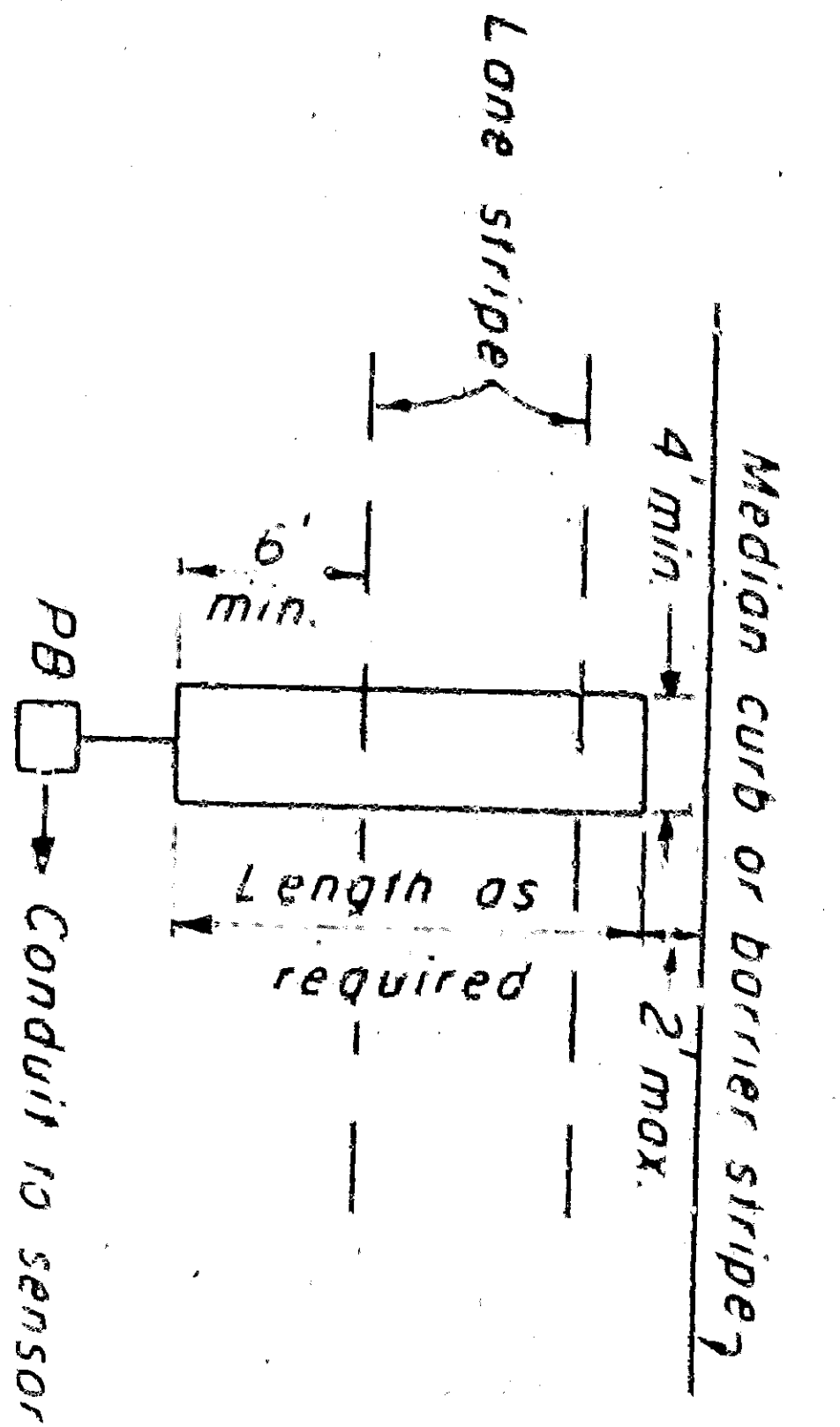
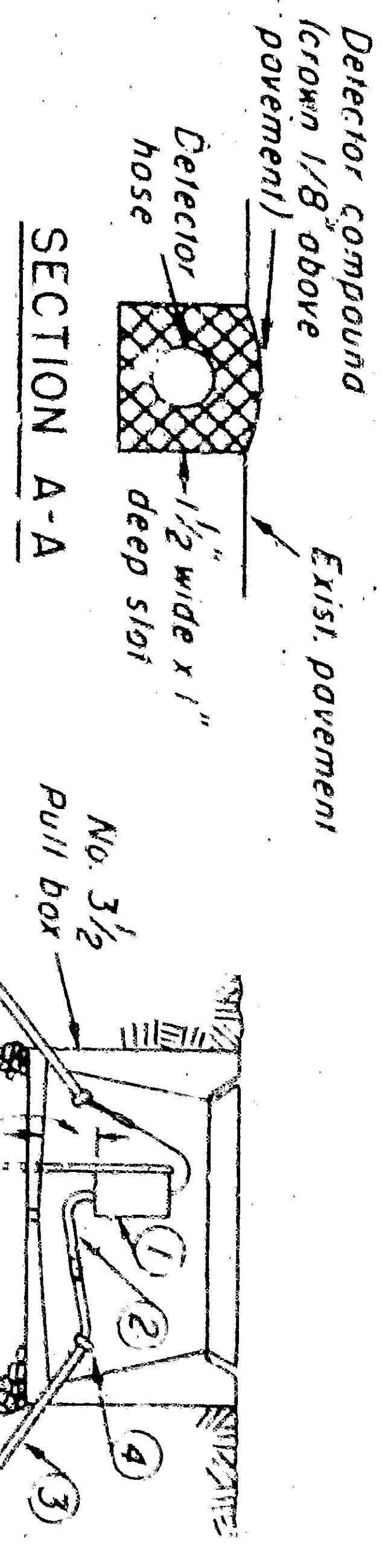


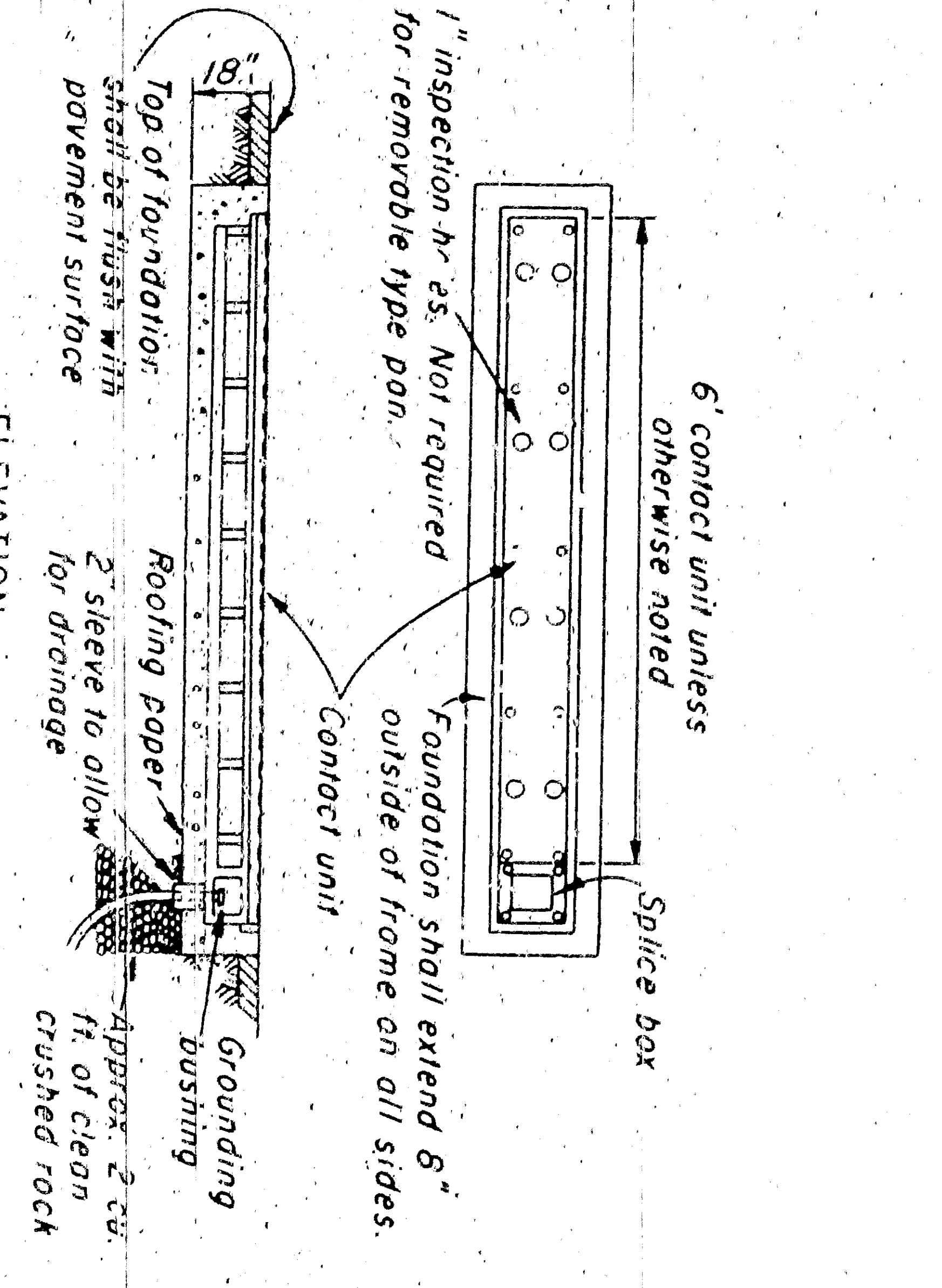
FIG. NO.	STATE PROJ. NO.	SECTION	SHEET TOTAL
100	100	100	100

DATE: 1/21/62
 DRAWN BY: [Signature]
 CHECKED BY: [Signature]
 IN CHARGE: [Signature]



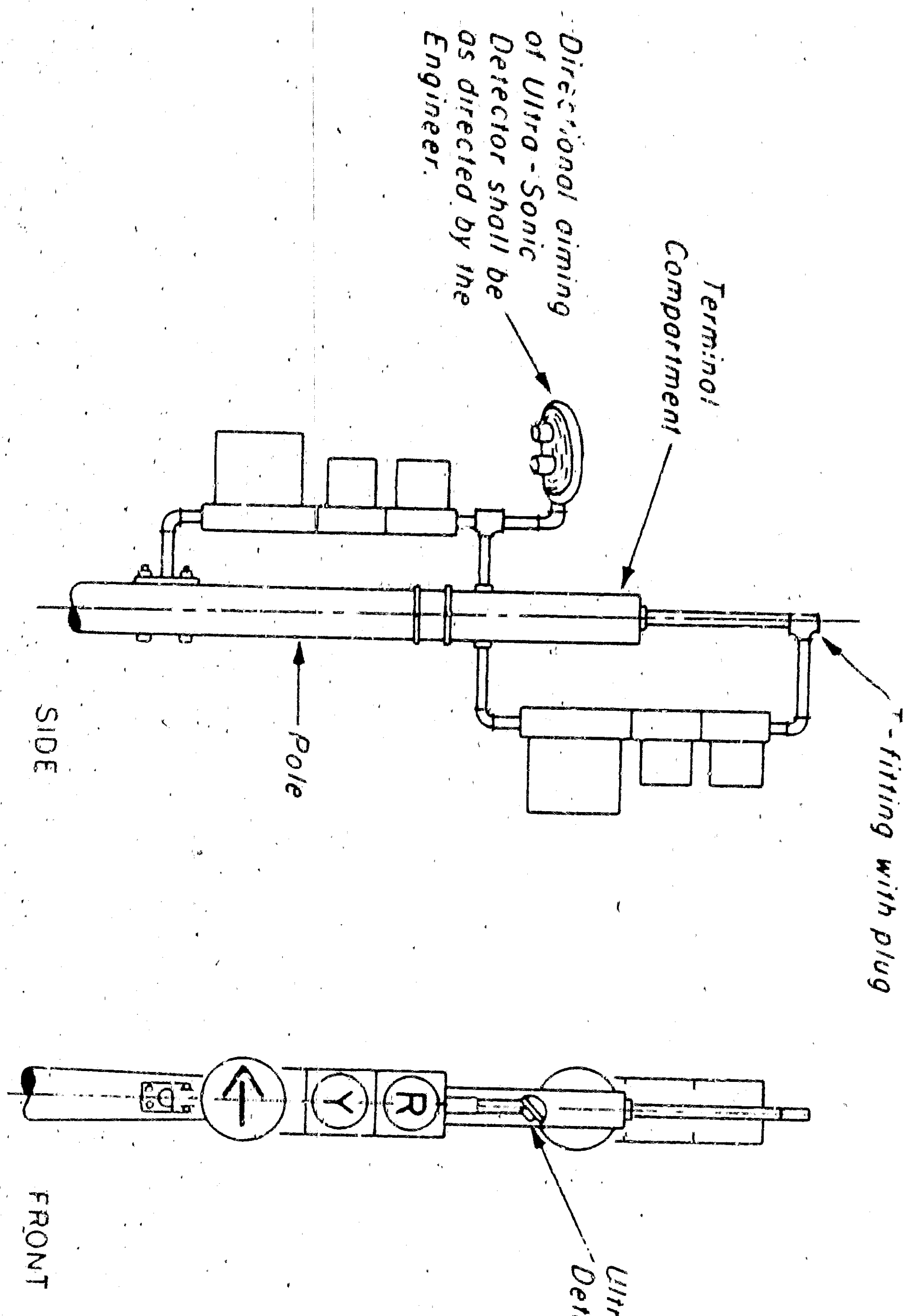
- ① Transducer and amplifier attached to metal stakes with hose pulled down.
- ② Rubber hose from transducer spliced to 1/4" I.D. 3/32" wall, neoprene tubing by means of 1/4" serrated hose connector.
- ③ Neoprene tubing (of length required) run continuous through 3/4" conduit and through detector compound.
- ④ Seal conduit ends.

IMPACT DETECTOR
 (For installation instructions see special provisions)

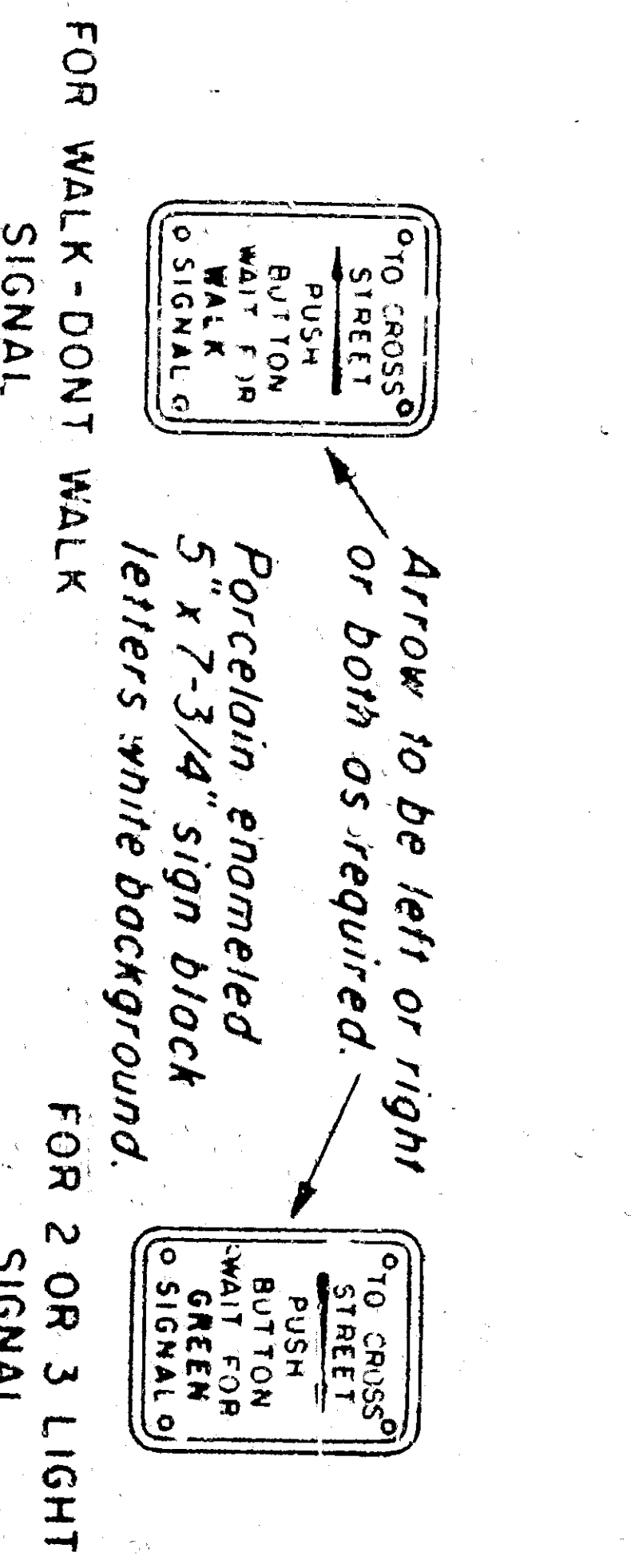
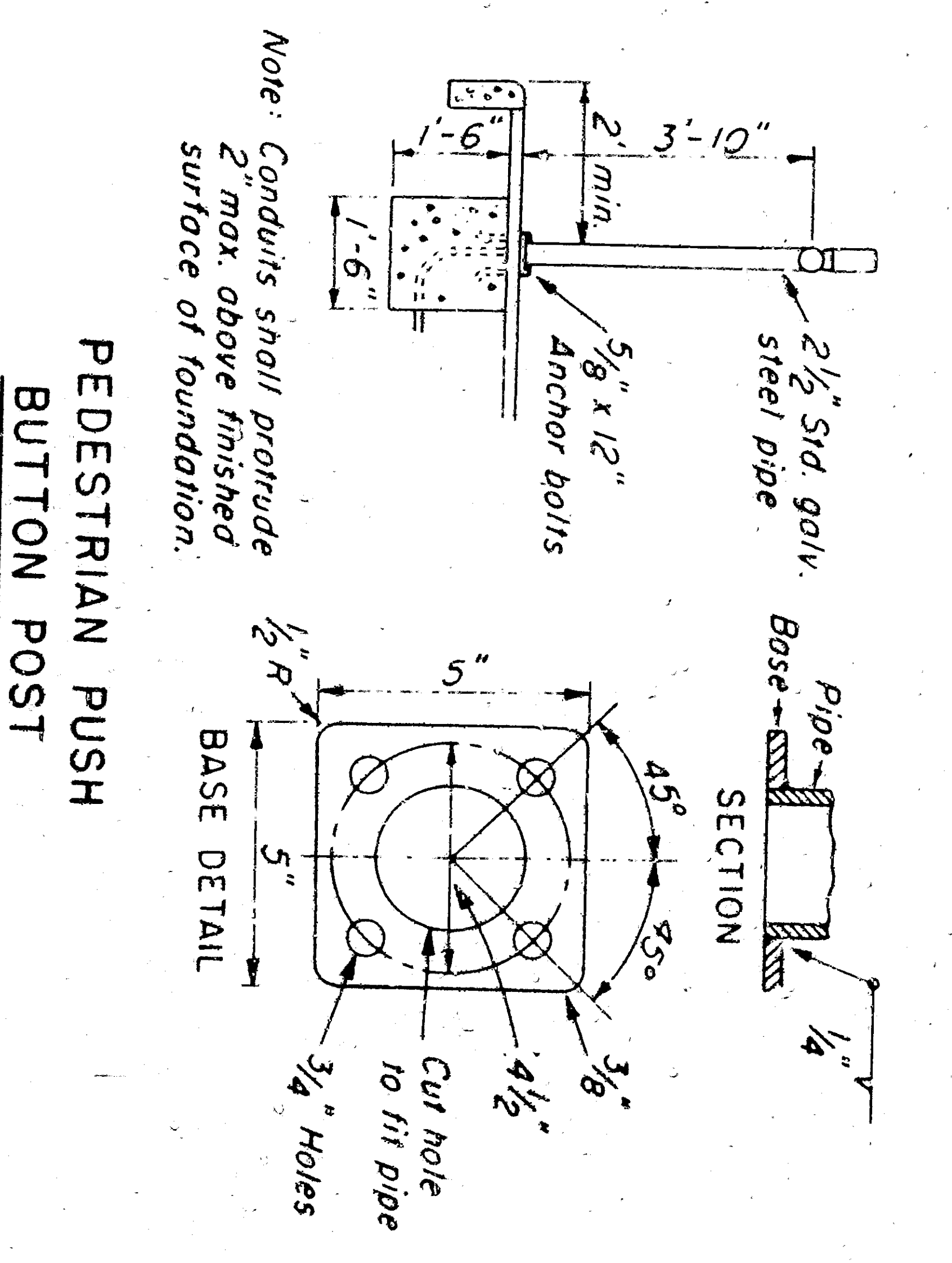


- Installation Notes:**
1. Detector position dimensions refer to contact unit.
 2. Concrete under removable contact unit mounting pan shall be finished flush with top of pan supporting angles.
 3. Detector contact unit surface shall be flush with rim of housing or no more than 1/8" higher, if low, unit shall be raised using one-piece, galvanized, sheet metal shims with dimensions the same as the bottom surface of the contact unit.
 4. Screw threads shall be coated with anti-settle compound. All screws shall be tightened securely.

- INDUCTIVE LOOP DETECTOR**
- Installation Notes:**
1. Saw groove in pavement for loop as shown.
 2. Install loop in accordance with manufacturer's recommendations.
 3. Place 1/2" conduit in sawed channel in pavement and run into pull box, inserting conductors from loop in conduit as it is being placed.
 4. Splice conductors from loop to 2#14 TW conductors through 1" conduit to sensor unit.
 5. Backfill groove and channel with material approved by the Engineer.



TYPICAL LEFT TURN LANE INSTALLATION
ULTRA-SONIC DETECTOR



PEDESTRIAN PUSH BUTTON & SIGN

For mounting on pedestrian push button post, provide filler for slope back of casting to fit curvature of post. Install push button on crosswalk side of sidewalk.

TYPE B: Use only when specified.

TYPE A: Red & green indicator lights.

VEHICLE DETECTORS

STATE OF CALIFORNIA		
DEPARTMENT OF PUBLIC WORKS		
DIVISION OF HIGHWAYS		
STANDARD DETAILS NO. 3B		
TRAFFIC SIGNAL AND HIGHWAY LIGHTING INSTALLATIONS		
SCALE AS NOTED	DRAWING NO. E-	
Revised		

DWG. NO. 3356 Sheet 7 of 8 Sheets ES-3B-1